

Protective & Marine Coatings



Bolt Brown SW 4001
LRV 8%



Modular Tan SW 4002
LRV 26%



Pallet Tan SW 4003
LRV 49%



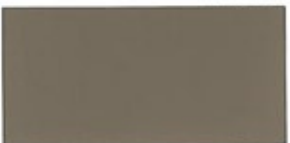
Tannery • SW 4004
LRV 64%



Cylinder Cream SW 4005
LRV 74%



Lodestone SW 4006
LRV 51%



Bronze SW 4007
LRV 23%



Umbra SW 4008
LRV 9%



Walnut Brown SW 4009
LRV 3%



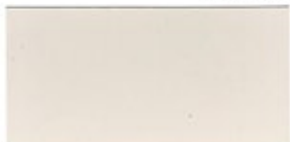
Pumice Stone SW 4010
LRV 23%



Mortar SW 4011
LRV 43%



Cirrus White SW 4012
LRV 74%



Ballast Beige SW 4013
LRV 65%



Cantilever Tan SW 4014
LRV 48%



Torque Tan SW 4015
LRV 35%



Corrugate Brown SW 4016
LRV 24%



Graphite SW 4017
LRV 5%



Tower Gray SW 4018
LRV 18%



Flint Gray SW 4019
LRV 47%



Zephyr SW 4020
LRV 63%



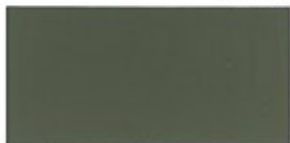
Filament SW 4021
LRV 72%



Balsam SW 4022
LRV 62%



Olivine SW 4023
LRV 46%



Enviro Green SW 4024
LRV 15%



Anchor Gray SW 4025
LRV 13%



Slate Gray SW 4026
LRV 36%



Galvano SW 4027
LRV 58%



Gypsum ♦ SW 4028
LRV 72%



Pillar White SW 4029
LRV 77%



Nickel SW 4030
LRV 47%



Structural Gray SW 4031
LRV 24%



Vacuum Black SW 4032
LRV 4%



Brass ♦ SW 4033
LRV 48%



Junction Yellow • SW 4034
LRV 69%

For INTERIORS use only with:

- ♦ BAC's
- EnviroToners
- BAC's or EnviroToners



Optic Yellow SW 4035 LRV 76%



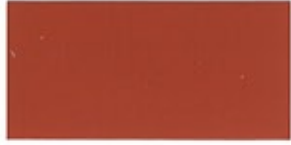
Mill Ivory • SW 4036 LRV 81%



Silica SW 4037 LRV 59%



Copperplate SW 4038 LRV 31%



Thermal Orange SW 4039 LRV 18%



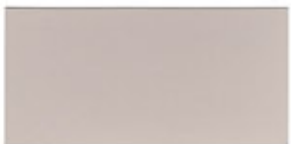
Deck Red SW 4040 LRV 8%



Precision Plum SW 4041 LRV 15%



Magnetic Mauve SW 4042 LRV 29%



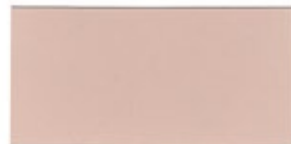
Bearing Taupe SW 4043 LRV 50%



Quartzite SW 4044 LRV 67%



Ceramic Buff SW 4045 LRV 73%



Carousel Coral SW 4046 LRV 53%



Firedust SW 4047 LRV 30%



Mason Brick SW 4048 LRV 8%



Camshaft SW 4049 LRV 12%



Voltage Violet SW 4050 LRV 36%



Rhombus SW 4051 LRV 56%



Argent SW 4052 LRV 71%



Cool Blue SW 4053 LRV 69%



Basin SW 4054 LRV 51%



Polymer Blue SW 4055 LRV 33%



Blueprint SW 4056 LRV 6%



Toggle Teal SW 4057 LRV 28%



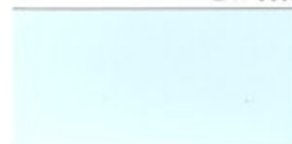
Current SW 4058 LRV 67%



Conductor Blue SW 4059 LRV 31%



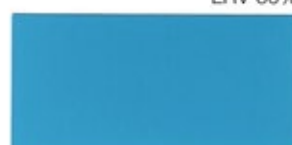
Off Shore SW 4060 LRV 50%



Hydro Blue SW 4061 LRV 74%



Spillway SW 4062 LRV 60%



Robotic Blue SW 4063 LRV 31%



Turbine Blue SW 4064 LRV 18%



Techno Teal SW 4065 LRV 21%



Rotor Turquoise SW 4066 LRV 37%



Dewpoint SW 4067 LRV 56%



Alloy Aqua SW 4068 LRV 76%



Emerald Ice • SW 4069 LRV 78%



Generator Green SW 4070 LRV 44%



Rain Forest SW 4071 LRV 8%



Cedar Green ■ SW 4072 LRV 3%



Recycled Red ■ SW 4073 LRV 26%



Power Orange • SW 4074 LRV 34%



Green Byte • SW 4076 LRV 44%



Circuit Breaker • SW 4077 LRV 32%



Kinetic Teal SW 4078 LRV 23%



Laser Blue SW 4079 LRV 16%



Plumb SW 4080 LRV 17%



ANSI #61 Gray



ANSI #70 Gray

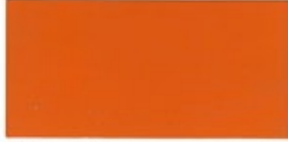
Safety Colors



Safety Red SW4081 LRV 11%



International Orange SW4082 LRV 17%



Safety Orange SW4083 LRV 17%



Safety Yellow SW4084 LRV 28%



Safety Green • SW4085 LRV 29%



Safety Blue SW4086 LRV 17%



Black SW4090 LRV 0%



Silver Brite® SW4091 B59S11 Industrial Aluminum Paint B59S4

Whites



Ultra White LRV 88%



Extra White LRV 86%



Pure White LRV 85%

Primers



Off White



Buff/Tan



Zinc Clad™ Primers



Gray



Red Oxide

FluoroKem Colors



Bright Yellow B65YW552



Safety Red B65R550



Safety Yellow NB65Y550



Green B65G550



Gold B65YW551



Blue B65L550



Terra Cotta B65RW551



Black B65B550



Red Oxide B65RW552



White B65W550

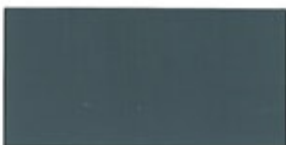
Hi-Temp Colors



Cirrus Gray HT1



Shale Gray HT2



Thunder Gray HT3



New Toned White HT4

Potable Water Colors



Mill White NSF1



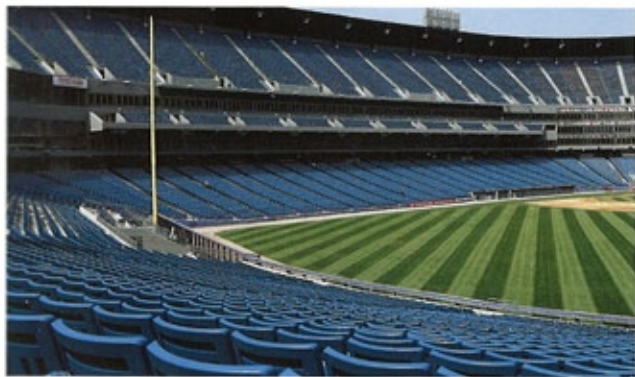
Buff NSF2



Light Blue NSF3



Sanitary White NSF4



ControlTech Colors



Haze Gray CT1



Tile Red CT2

Protective & Marine Coatings **COLOR** System THE 4000 SERIES

Color approximates the appearance of the actual coating. Factors such as the type of product, degree of gloss, texture, size and shape of area, lighting, heat, or method of application may cause color variance. Performance of certain colors may be affected by specific exposure environments. Not all colors are available in all Product lines. Contact your local Sherwin-Williams representative for color availability of each product. NOTE: For uniformity of color and gloss, some colors may require multiple coats.